

Thursday, March 27, 2025
Time of Issue: 0800 hours IST
(MORNING)

All India Weather Warning Bulletin

Weather Warnings for next 7 days is given below:
(Graphics for warnings & rainfall distribution (Table 1) are given below the text:

27th March (Day 1):

- ❖ **Heavy rainfall/snowfall** very likely at isolated places over Jammu-Kashmir-Ladakh-Gilgit-Baltistan-Muzaffarabad.
- ❖ **Thunderstorm accompanied with gusty winds (speed reaching 40 - 50 kmph) & lightning** very likely at isolated places over Jammu-Kashmir-Ladakh-Gilgit-Baltistan-Muzaffarabad, Himachal Pradesh; **with gusty winds (speed reaching 30 - 40 kmph)** at isolated places over Uttarakhand, Punjab, South Interior Karnataka; **with lightning** likely at isolated places over Coastal Karnataka, Kerala & Mahe, Tamil Nadu, Puducherry & Karaikal.
- ❖ **Dust raising winds (speed reaching 20 - 30 kmph)** very likely at isolated places over West Rajasthan.
- ❖ **Hot day conditions** very likely at isolated pockets of West Uttar Pradesh.

28th March (Day 2):

- ❖ **Heavy rainfall/snowfall** very likely at isolated places over Arunachal Pradesh.
- ❖ **Thunderstorm accompanied with lightning** very likely at isolated places over Arunachal Pradesh, Assam & Meghalaya, Sub-Himalayan West Bengal & Sikkim.
- ❖ **Hot day conditions** very likely at isolated pockets of Gangetic West Bengal.
- ❖ **Hot and Humid Conditions** very likely at isolated places over Coastal Andhra Pradesh & Yanam.

29th March (Day 3):

- ❖ **Heavy rainfall/snowfall** likely at isolated places over Arunachal Pradesh.
- ❖ **Thunderstorm accompanied with lightning** likely at isolated places over Arunachal Pradesh, Assam & Meghalaya, Sub-Himalayan West Bengal & Sikkim.
- ❖ **Heat wave conditions** likely at isolated places over Interior Odisha.
- ❖ **Hot and Humid Conditions** likely at isolated places over Coastal Andhra Pradesh & Yanam and Gujarat Region.

30th March (Day 4):

- ❖ **Heat wave conditions** likely at isolated places over interior Odisha.
- ❖ **Hot and Humid Conditions** likely at isolated places over Coastal Andhra Pradesh & Yanam and Gujarat Region.

31st March (Day 5):

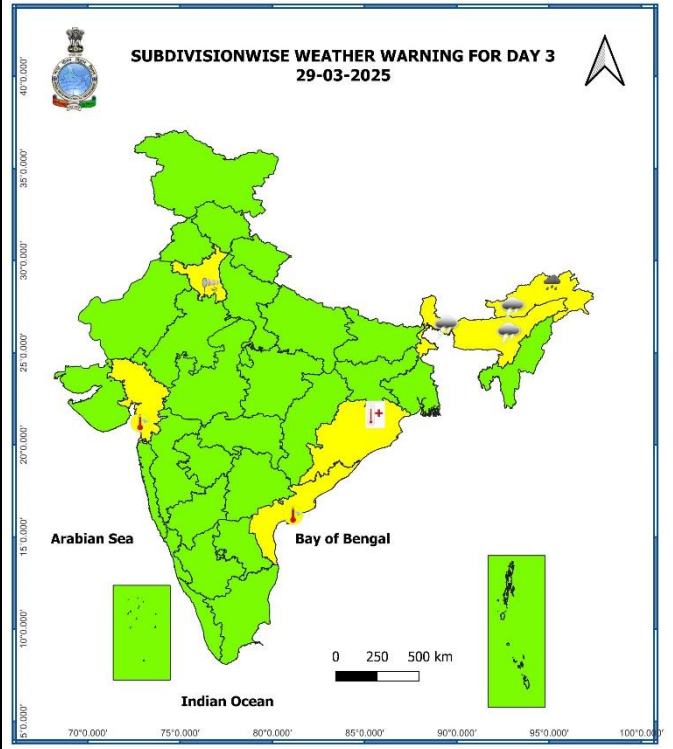
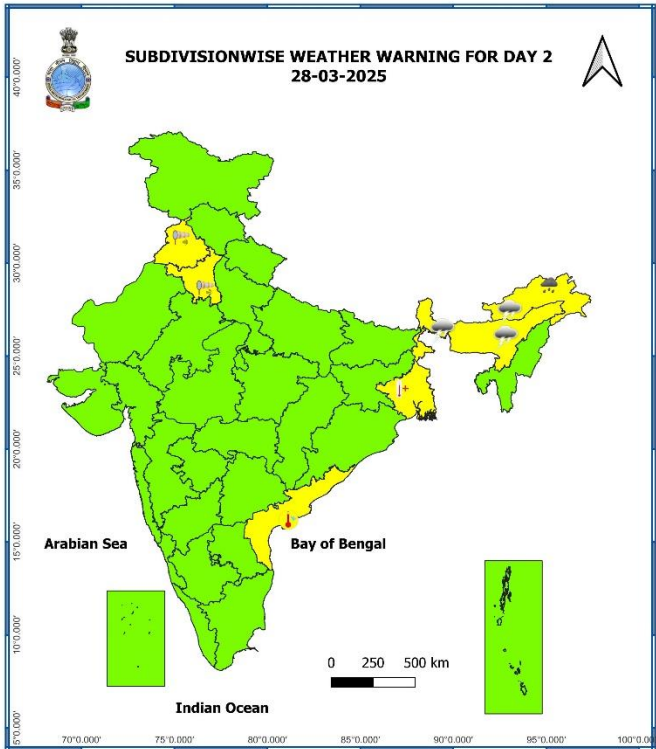
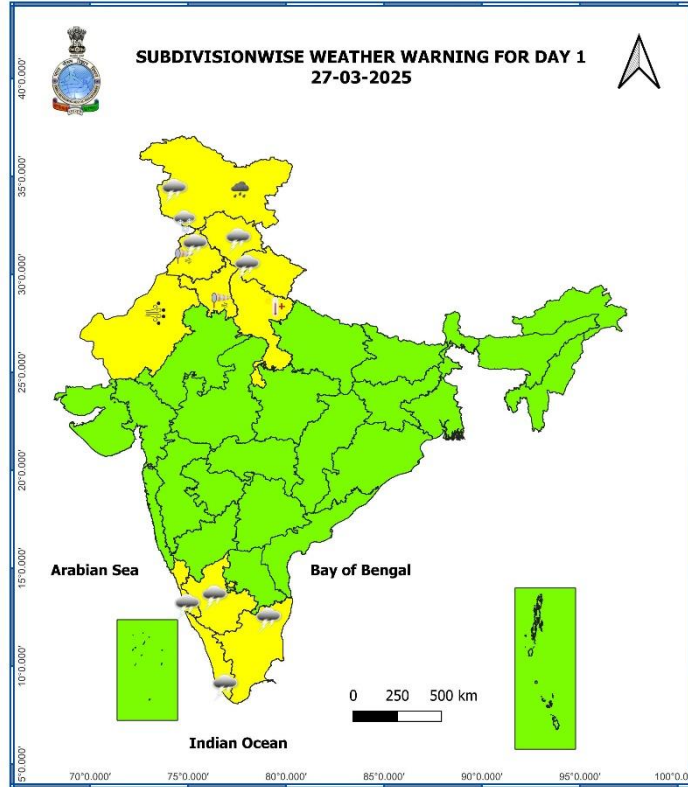
- ❖ **No warning.**

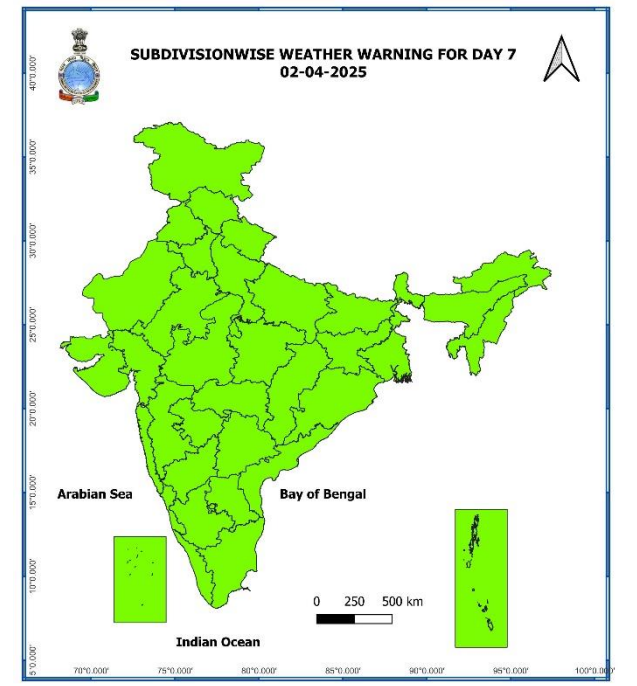
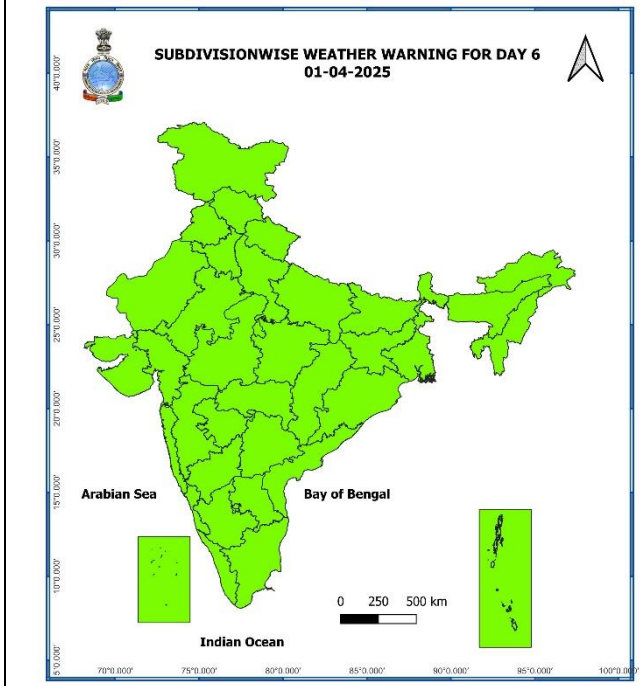
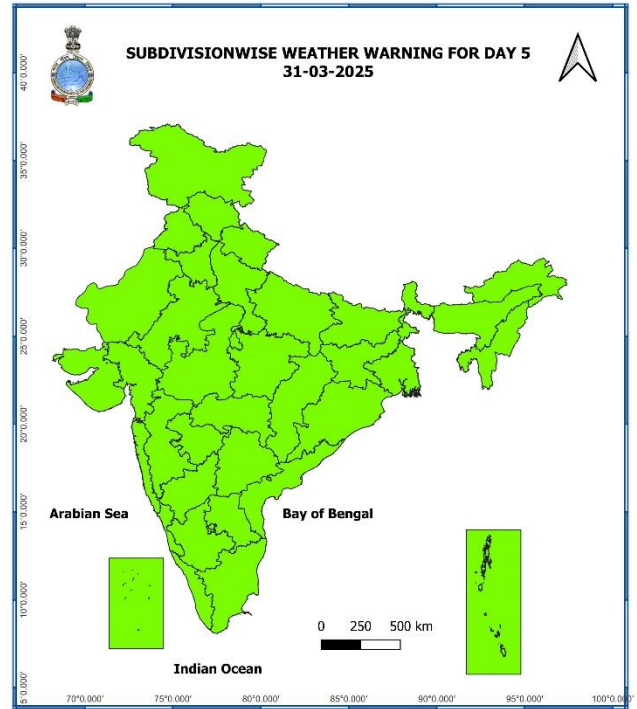
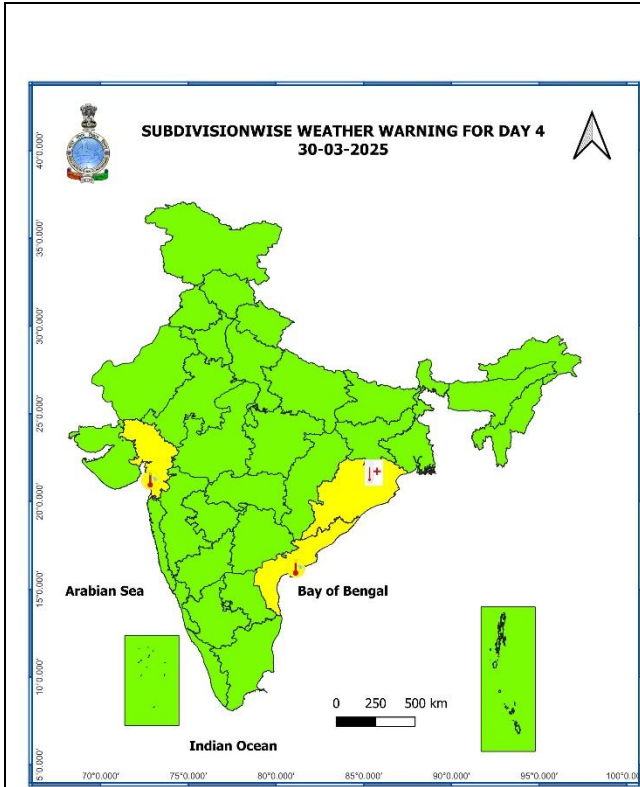
01st April (Day 6):

- ❖ **No warning.**

02nd April (Day 7):

- ❖ **No warning.**





- Action may be taken based on **ORANGE AND RED** COLOUR warnings.
- Vulnerable regions likely urban and hilly areas action may be initiated for heavy rainfall warning.
- As the lead period increases forecast accuracy decreases.

Table-1

7 Days Rainfall Forecast								
S. No.	Subdivision	27-Mar	28-Mar	29-Mar	30-Mar	31-Mar	01-Apr	02-Apr
		Day 1	Day 2	Day 3	Day 4	Day 5	Day 6	Day 7
1	ANDAMAN & NICOBAR ISLANDS	DRY	DRY	DRY	DRY	ISOL	SCT	SCT
2	ARUNACHAL PRADESH	ISOL	FWS	FWS	SCT	ISOL	ISOL	SCT
3	ASSAM & MEGHALAYA	DRY	ISOL	ISOL	ISOL	ISOL	ISOL	ISOL
4	NAGALAND, MANIPUR, MIZORAM & TRIPURA	ISOL	ISOL	ISOL	ISOL	ISOL	ISOL	DRY
5	SUB-HIMALAYAN WEST BENGAL & SIKKIM	ISOL	SCT	ISOL	DRY	ISOL	DRY	DRY
6	GANGETIC WEST BENGAL	DRY	DRY	DRY	DRY	DRY	DRY	DRY
7	ODISHA	DRY	DRY	DRY	DRY	DRY	DRY	ISOL
8	JHARKHAND	DRY	DRY	DRY	DRY	DRY	DRY	DRY
9	BIHAR	DRY	DRY	DRY	DRY	DRY	DRY	DRY
10	EAST UTTAR PRADESH	DRY	DRY	DRY	DRY	DRY	DRY	DRY
11	WEST UTTAR PRADESH	DRY	DRY	DRY	DRY	DRY	DRY	DRY
12	UTTARAKHAND	ISOL	ISOL	DRY	DRY	DRY	DRY	DRY
13	HARYANA CHANDIGARH & DELHI	DRY	DRY	DRY	DRY	DRY	DRY	DRY
14	PUNJAB	ISOL	DRY	DRY	DRY	DRY	DRY	DRY
15	HIMACHAL PRADESH	SCT	DRY	DRY	DRY	DRY	DRY	DRY
16	JAMMU & KASHMIR AND LADAKH	FWS	ISOL	DRY	DRY	DRY	DRY	DRY
17	WEST RAJASTHAN	DRY	DRY	DRY	DRY	DRY	DRY	DRY
18	EAST RAJASTHAN	DRY	DRY	DRY	DRY	DRY	DRY	DRY
19	WEST MADHYA PRADESH	DRY	DRY	DRY	DRY	DRY	DRY	DRY
20	EAST MADHYA PRADESH	DRY	DRY	DRY	DRY	DRY	DRY	DRY
21	GUJARAT REGION	DRY	DRY	DRY	DRY	DRY	DRY	DRY
22	SAURASHTRA & KUTCH	DRY	DRY	DRY	DRY	DRY	DRY	ISOL
23	KONKAN & GOA	DRY	DRY	ISOL	ISOL	DRY	DRY	DRY
24	MADHYA MAHARASHTRA	DRY	DRY	ISOL	ISOL	ISOL	ISOL	ISOL
25	MARATHAWADA	DRY	DRY	DRY	DRY	ISOL	ISOL	ISOL
26	VIDARBHA	DRY	DRY	DRY	DRY	DRY	DRY	DRY
27	CHHATTISGARH	DRY	DRY	DRY	DRY	DRY	DRY	ISOL
28	COASTAL ANDHRA PRADESH & YANAM	DRY	DRY	DRY	DRY	DRY	DRY	DRY
29	TELANGANA	DRY	DRY	DRY	DRY	DRY	DRY	ISOL
30	RAYALASEEMA	DRY	DRY	DRY	DRY	DRY	DRY	DRY
31	TAMILNADU PUDUCHERRY & KARAIKAL	ISOL	ISOL	DRY	DRY	DRY	DRY	DRY
32	COASTAL KARNATAKA	ISOL	DRY	DRY	DRY	DRY	DRY	ISOL
33	NORTH INTERIOR KARNATAKA	DRY	DRY	DRY	DRY	DRY	DRY	DRY
34	SOUTH INTERIOR KARNATAKA	ISOL	DRY	DRY	DRY	DRY	DRY	DRY
35	KERALA & MAHE	SCT	ISOL	ISOL	ISOL	ISOL	ISOL	SCT
36	LAKSHADWEEP	DRY	DRY	DRY	DRY	DRY	DRY	DRY

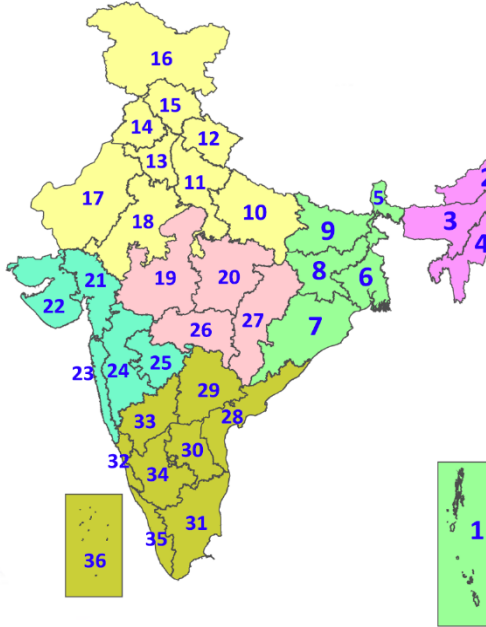
• As the lead period increases forecast accuracy decreases.

Legends & abbreviations:

- ❖ **Heavy Rain:**64.5-115.5mm; **Very Heavy Rain:**115.6-204.4mm; **Extremely Heavy Rain:** >204.4mm.
- ❖ **Obsy.:** Observatory; **AWS:** Automatic Weather Station; **ARG:** Automatic Rain Gauge; **dist.:** District; **NH:** National Highway; **KVK:** Krishi Vigyan Kendra; **DVC:** Damodar Valley Corporation; **PTO:** Part Time Office, **Aero:** Aerodrome, **IAF:** Indian Air Force.
- ❖ **Region wise classification of meteorological Sub-Divisions:**
 - **Northwest India:** Western Himalayan Region (Jammu-Kashmir-Ladakh-Gilgit-Baltistan-Muzaffarabad, Himachal Pradesh and Uttarakhand); Punjab, Haryana-Chandigarh-Delhi; West Uttar Pradesh, East Uttar Pradesh, West Rajasthan and East Rajasthan.
 - **Central India:** West Madhya Pradesh, East Madhya Pradesh, Vidarbha and Chhattisgarh.
 - **East India:** Bihar, Jharkhand, Sub-Himalayan West Bengal & Sikkim; Gangetic West Bengal, Odisha and Andaman & Nicobar Islands.
 - **Northeast India:** Arunachal Pradesh, Assam & Meghalaya and Nagaland, Manipur, Mizoram & Tripura.
 - **West India:** Gujarat Region, Saurashtra & Kutch, Konkan & Goa, Madhya Maharashtra and Marathawada.
 - **South India:** Coastal Andhra Pradesh & Yanam, Telangana, Rayalaseema, Coastal Karnataka, North Interior Karnataka, South Interior Karnataka, Kerala & Mahe, Tamil Nadu, Puducherry & Karaikal and Lakshadweep.

LEGENDS

1. अंडमान और निकोबार द्वीपसमूह
2. अरुणाचल प्रदेश
3. असम और मेघालय
4. नागालैंड, मणिपुर, मिजोरम और त्रिपुरा
5. उप-हिमालयी पश्चिम बंगाल और सिक्किम
6. गंगीय पश्चिम बंगाल
7. ओडिशा
8. झारखंड
9. बिहार
10. पूर्वी उत्तर प्रदेश
11. पश्चिम उत्तर प्रदेश
12. उत्तराखंड
13. हरियाणा, चंडीगढ़ और दिल्ली
14. पंजाब
15. हिमाचल प्रदेश
16. जम्मू और कश्मीर और लद्दाख
17. पश्चिम राजस्थान
18. पूर्वी राजस्थान
19. पश्चिम मध्य प्रदेश
20. पूर्वी मध्य प्रदेश
21. गुजरात
22. सौराष्ट्र
23. कोंकण और गोवा
24. मध्य महाराष्ट्र
25. मराठवाड़ा
26. विदर्भ
27. छत्तीसगढ़
28. तटीय आंध्र प्रदेश और यनम
29. तेलंगाना
30. रायलसीमा
31. तमिलनाडु, पुडुचेरी और कराईकल
32. तटीय कर्नाटक
33. आंतरिक उत्तरी कर्नाटक
34. आंतरिक दक्षिणी कर्नाटक
35. केरल और माहे
36. लक्षद्वीप



1. Andaman & Nicobar Islands
2. Arunachal Pradesh
3. Assam & Meghalaya
4. Nagaland, Manipur, Mizoram & Tripura
5. Sub-Himalayan West Bengal & Sikkim
6. Gangetic West Bengal
7. Odisha
8. Jharkhand
9. Bihar
10. East Uttar Pradesh
11. West Uttar Pradesh
12. Uttarakhand
13. Haryana, Chandigarh & Delhi
14. Punjab
15. Himachal Pradesh
16. Jammu & Kashmir and Ladakh
17. West Rajasthan
18. East Rajasthan
19. West Madhya Pradesh
20. East Madhya Pradesh
21. Gujarat
22. Saurashtra
23. Konkan & Goa
24. Madhya Maharashtra
25. Marathwada
26. Vidarbha
27. Chhattisgarh
28. Coastal Andhra Pradesh & Yanam
29. Telangana
30. Rayalaseema
31. Tamilnadu, Puducherry & Karaikal
32. Coastal Karnataka
33. North Interior Karnataka
34. South Interior Karnataka
35. Kerala & Mahe
36. Lakshadweep

SPATIAL DISTRIBUTION (% of Stations reporting)

% Stations	Category	% Stations	Category
76-100	Widespread (WS/Most Places)	26-50	Scattered (SCT/A Few Places)
51-75	Fairly Widespread (FWS/Many Places)	1-25	Isolated (ISOL)

- | | | |
|----------------------|----------------------|--------------|
| Fog | Heavy Snow | Cold Wave |
| Heavy Rain | Dust Storm | Cold Day |
| Very Heavy Rain | Heat Wave | Ground Frost |
| Extremely Heavy Rain | Warm Night | |
| Thunder & Lightning | Hot Day | |
| Hailstorm | Hot & Humid | |
| Dust Raising Winds | Strong Surface Winds | |

COLOUR CODED WARNING

No Warning (No Action)
Watch (Be Aware)
Alert (Be Prepared To Take Action)
Warning (Take Action)

Probabilistic Forecast

Terms	Probability of Occurrence (%)
Unlikely	< 25
Likely	25 - 50
Very Likely	50 - 75
Most Likely	> 75

* Red colour warning does not mean "Red Alert", Red colour warning means "Take Action".
Forecast and Warning for any day is valid from 0830 hours IST of day till 0830 hours IST of next day.
For more details, kindly visit <https://mausam.imd.gov.in> or contact: 011-2434-4599
(Service to the Nation since 1875)

Hot and Humid: When

DEFINITION/CRITERIA	
Rain/ Snow *	Heavy: 64.5 to 115.5 mm/cm * Very Heavy: 115.6 to 204.4 mm/cm* Extremely Heavy: > 204.4 mm/cm *
Heat Wave	When maximum temperature of a station reaches $\geq 40^\circ\text{C}$ for plains and $\geq 30^\circ\text{C}$ for hilly regions (a) Based on Departure from normal Heat Wave: Maximum Temperature Departure from normal 4.5°C to 6.4°C . Severe Heat Wave: Maximum Temperature Departure from normal $\geq 6.5^\circ\text{C}$ (b). Based on Actual maximum temperature Heat Wave: When actual maximum temperature $\geq 45^\circ\text{C}$. Severe Heat Wave: When actual maximum temperature $\geq 47^\circ\text{C}$ (c). Criteria for heat wave for coastal stations When maximum temperature departure is $>4.5^\circ\text{C}$ from normal. Heat Wave may be described provided maximum temperature $\geq 37^\circ\text{C}$
Warm Night	When maximum temperature remains 40°C Warm Night: When minimum temperature departure 4.5°C to 6.4°C . Severe Warm Night: When minimum temperature departure $>6.4^\circ\text{C}$.
Cold Wave	When minimum temperature of a station $\leq 10^\circ\text{C}$ for plains and $\leq 0^\circ\text{C}$ for hilly regions. (a) Based on departure Cold Wave: Minimum Temperature Departure from normal -4.5°C to -6.4°C . Severe Cold Wave: Minimum Temperature Departure from normal $\leq -6.5^\circ\text{C}$ (b) Based on actual Minimum Temperature (for Plains only) Cold Wave : When Minimum Temperature is $\leq 4.0^\circ\text{C}$ Severe Cold Wave: When Minimum Temperature is $\leq 2.0^\circ\text{C}$ (c) For Coastal Stations When Minimum Temperature departure is $\leq -4.5^\circ\text{C}$ & actual Minimum Temperature is $\leq 15^\circ\text{C}$
Cold Day	When minimum temperature of a station $\leq 10^\circ\text{C}$ for plains and $\leq 0^\circ\text{C}$ for hilly regions Based on departure Cold Day: Maximum Temperature Departure from normal -4.5°C to -6.4°C . Severe Cold Day: Maximum Temperature Departure from normal $\leq -6.5^\circ\text{C}$
Fog	Phenomenon of small droplets suspended in air and the horizontal visibility $< 1\text{km}$ Moderate Fog: When the visibility between 500-200 metres Dense Fog: when the visibility between 50- 200 metres Very Dense Fog: when the visibility < 50 metres
Thunderstorm	Sudden electrical discharges manifested by a flash of light (Lightning) and a sharp rumbling sound (thunder)
Dust/Sand Storm	An ensemble of particles of dust or sand energetically lifted to great heights by a strong and turbulent wind.
Frost	Ice deposits on ground Air temperature $\leq 4^\circ\text{C}$ (over Plains)
Squall	A strong wind that rises suddenly, lasts for atleast 1 minute. Moderate: Wind speed 52-61 kmph Severe: Wind speed 62-87 kmph Very Severe: Wind speed >87 kmph
Sea State	Effect of various waves in the sea over specific area Rough to very rough: Wind speed 41-62 kmph (22-33 knots) & Wave height 2.5-6 metre High to very high: Wind speed 63-117 kmph (34-63 knots) & Wave height 6-14 metre Phenomenal: Wind speed >117 kmph (>63 knots) & Wave height >14 metre
Cyclone	Cyclonic Storm: Wind speed 62-87 kmph (34-47 knots) Severe Cyclonic Storm: Wind speed 88-117 kmph (48-63 knots) Very Severe Cyclonic Storm: Wind speed 118-165 kmph (64 - 89 knots) Extremely Severe Cyclonic Storm: Wind speed 166-220 kmph (90 -119 knots) Super Cyclone Storm: Wind speed >220 kmph (>119 knots)

* Red colour warning does not mean "Red Alert", Red colour warning means "Take Action".
 Forecast and Warning for any day is valid from 0830 hours IST of day till 0830 hours IST of next day.
 For more details, kindly visit <https://mausam.imd.gov.in> or contact: 011-2434-4599
 (Service to the Nation since 1875)

Hot and Humid: When maximum temperatures remains 3°C above normal along with the above normal relative humidity.