

Sunday, May 18, 2025
Time of Issue: 0800 hours IST
(MORNING)

All India Impact Based Weather Warning Bulletin

Weather Warnings for next 7 days is given below:

(Graphics for warnings & rainfall distribution (Table 1) are given below the text:

18th May (Day 1)

- ❖ **Heavy to Very Heavy Rainfall** very likely at isolated places over Assam & Meghalaya and South Interior Karnataka.
- ❖ **Heavy Rainfall** very likely at isolated places over Arunachal Pradesh, Costal Karnataka, Kerala & Mahe, Madhya Maharashtra, Nagaland, Manipur, Mizoram and Tripura, North Interior Karnataka, Tamil Nadu Puducherry & Karaikal, Telangana and West Bengal & Sikkim.
- ❖ **Thundersquall with wind speed reaching(50-60kmph)** very likely at isolated places over Bihar, Jharkhand and Madhya Maharashtra.
- ❖ **Thunderstorm accompanied with lightning & gusty winds(40-50kmph)** very likely at isolated places over Assam & Meghalaya, Chhattisgarh, East Rajasthan, East Uttar Pradesh, Himachal Pradesh, Interior Karnataka, Jammu-Kashmir-Ladakh-Gilgit-Baltistan-Muzaffarabad, Konkan & Goa, Marathwada, Nagaland, Manipur, Mizoram and Tripura, Tamil Nadu Puducherry & Karaikal, Telangana, Vidarbha, West Bengal & Sikkim and West Madhya Pradesh.
- ❖ **Thunderstorm accompanied with lightning & gusty winds(30-40kmph)** very likely at isolated places over Andhra Pradesh, East Madhya Pradesh, Kerala & Mahe and Odisha.
- ❖ **Thunderstorm accompanied with Lightning** very likely at isolated places over Arunachal Pradesh, Costal Karnataka and Lakshadweep.
- ❖ **Dust Raising Winds** very likely at isolated places over West Rajasthan.
- ❖ **Heat Wave conditions** very likely at isolated places over Jammu-Kashmir-Gilgit-Baltistan-Muzaffarabad, Madhya Pradesh, Rajasthan and Uttar Pradesh.
- ❖ **Warm Night conditions** very likely at isolated places over East Madhya Pradesh.
- ❖ **Squally wind with speed 45 kmph to 50 kmph gusting to 55 kmph** likely to prevail along and off Oman coast, along and off South Sri Lanka coast and adjoining southwest Bay of Bengal, over Gulf of Mannar and adjoining Comorin area. **Squally weather with wind speed 35 kmph to 45 kmph gusting to 55 kmph** prevailing along and off Kerala, Karnataka coasts and adjoining Lakshadweep area.

19th May (Day 2)

- ❖ **Heavy to Very Heavy Rainfall** very likely at isolated places over Interior Karnataka.
- ❖ **Heavy Rainfall** very likely at isolated places over Arunachal Pradesh, Assam & Meghalaya, Costal Karnataka, Kerala & Mahe, Konkan & Goa, Lakshadweep, Madhya Maharashtra, Rayalaseema, Sub Himalayan West Bengal & Sikkim and Tamil Nadu Puducherry & Karaikal.
- ❖ **Thunderstorm accompanied with Hailstorm** very likely at isolated places over Himachal Pradesh.
- ❖ **Thundersquall with wind speed reaching(50-60kmph)** very likely at isolated places over Bihar, Chhattisgarh, Jharkhand, Madhya Maharashtra and Vidarbha.
- ❖ **Thunderstorm accompanied with lightning & gusty winds(40-50kmph)** very likely at isolated places over East Rajasthan, Haryana, Chandigarh & Delhi, Himachal Pradesh, Interior Karnataka, Jammu-Kashmir-Ladakh-Gilgit-Baltistan-Muzaffarabad, Konkan & Goa, Marathwada, Nagaland, Manipur, Mizoram and Tripura, Punjab, Tamil Nadu Puducherry & Karaikal, Telangana, Uttar Pradesh, Uttarakhand and West Madhya Pradesh.
- ❖ **Thunderstorm accompanied with lightning & gusty winds(30-40kmph)** very likely at isolated places over Andhra Pradesh, Assam & Meghalaya, Costal Karnataka, East Madhya Pradesh, Kerala & Mahe, Odisha and West Bengal & Sikkim.
- ❖ **Thunderstorm accompanied with Lightning** very likely at isolated places over Arunachal Pradesh and Lakshadweep.
- ❖ **Dust Raising Winds** very likely at isolated places over West Rajasthan.
- ❖ **Strong Surface Winds** very likely at isolated places over Konkan & Goa.
- ❖ **Heat Wave conditions** very likely at isolated places over Madhya Pradesh, Rajasthan and West Uttar Pradesh.
- ❖ **Squally wind with speed 45 kmph to 50 kmph gusting to 55 kmph** likely to prevail along and off Yemen coast, over Gulf of Mannar and adjoining Comorin area. **Squally weather with wind speed 35 kmph to 45 kmph gusting to 55 kmph** prevailing along and off Kerala, Karnataka coasts and adjoining Lakshadweep area, along and off Goa, south Konkan coasts.

20th May (Day 3)

- ❖ **Heavy to Very Heavy Rainfall** likely at isolated places over Costal Karnataka, Kerala & Mahe, Konkan & Goa, Madhya Maharashtra and North Interior Karnataka.
- ❖ **Heavy Rainfall** likely at isolated places over Arunachal Pradesh, Assam & Meghalaya, Lakshadweep, South Interior Karnataka, Sub Himalayan West Bengal & Sikkim and Tamil Nadu Puducherry & Karaikal.
- ❖ **Thundersquall with wind speed reaching(50-60kmph)** likely at isolated places over Chhattisgarh, East Rajasthan, Madhya Maharashtra and Vidarbha.
- ❖ **Thunderstorm accompanied with lightning & gusty winds(40-50kmph)** likely at isolated places over Haryana, Chandigarh & Delhi, Interior Karnataka, Jharkhand, Konkan & Goa, Marathwada, Punjab, Tamil Nadu Puducherry & Karaikal, Uttar Pradesh, Uttarakhand and West Madhya Pradesh.
- ❖ **Thunderstorm accompanied with lightning & gusty winds(30-40kmph)** likely at isolated places over Andhra Pradesh, Assam & Meghalaya, Bihar, Costal Karnataka, East Madhya Pradesh, Himachal Pradesh, Kerala & Mahe, Nagaland, Manipur, Mizoram and Tripura, Odisha, Telangana and West Bengal & Sikkim.
- ❖ **Thunderstorm accompanied with Lightning** likely at isolated places over Arunachal Pradesh and Lakshadweep.
- ❖ **Dust Raising Winds** likely at isolated places over West Rajasthan.
- ❖ **Strong Surface Winds** likely at isolated places over Konkan & Goa.
- ❖ **Heat Wave conditions** likely at isolated places over West Rajasthan.
- ❖ **Squally wind with speed 45 kmph to 50 kmph gusting to 55 kmph** likely to prevail along and off Somalia coast, Yemen coast, over Gulf of Mannar and adjoining Comorin area. **Squally weather with wind speed 35 kmph to 45 kmph gusting to 55 kmph** prevailing along and off Kerala, Karnataka coasts and adjoining Lakshadweep area, along and off Goa, south Konkan coasts.

21st May (Day 4)

- ❖ **Heavy to Very Heavy Rainfall** likely at isolated places over Konkan & Goa and Madhya Maharashtra.
- ❖ **Heavy Rainfall** likely at isolated places over Arunachal Pradesh, Assam & Meghalaya, Costal Karnataka, Kerala & Mahe, North Interior Karnataka and Sub Himalayan West Bengal & Sikkim.
- ❖ **Thundersquall with wind speed reaching(50-60kmph)** likely at isolated places over Chhattisgarh, East Rajasthan, Marathwada and Vidarbha.
- ❖ **Thunderstorm accompanied with lightning & gusty winds(40-50kmph)** likely at isolated places over Haryana, Chandigarh & Delhi, Jharkhand, Konkan & Goa, Madhya Maharashtra, Punjab, Uttar Pradesh and West Madhya Pradesh.
- ❖ **Thunderstorm accompanied with lightning & gusty winds(30-40kmph)** likely at isolated places over Andhra Pradesh, Bihar, East Madhya Pradesh, Gangetic West Bengal, Interior Karnataka, Nagaland, Manipur, Mizoram and Tripura and Telangana.
- ❖ **Thunderstorm accompanied with Lightning** likely at isolated places over Arunachal Pradesh, Assam & Meghalaya, Costal Karnataka, Kerala & Mahe and Lakshadweep.
- ❖ **Dust Raising Winds** likely at isolated places over West Rajasthan.
- ❖ **Heat Wave conditions** likely at isolated places over West Rajasthan.
- ❖ **Squally wind with speed 45 kmph to 50 kmph gusting to 55 kmph** likely to prevail along and off Somalia coast, over Gulf of Mannar and adjoining Comorin area.

22nd May (Day 5)

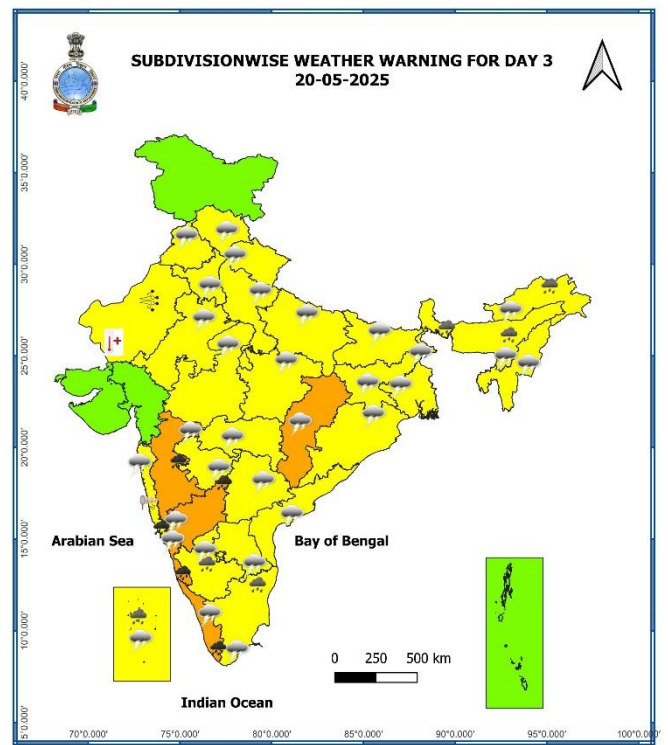
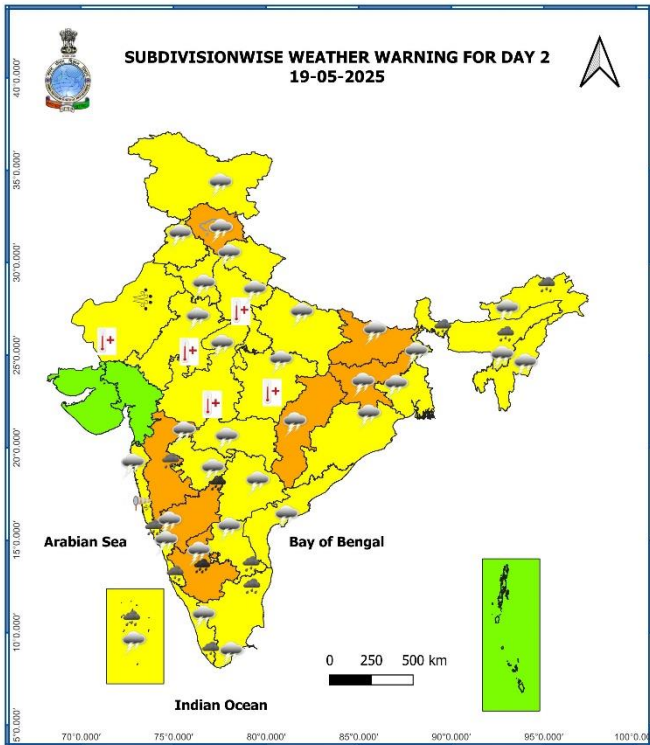
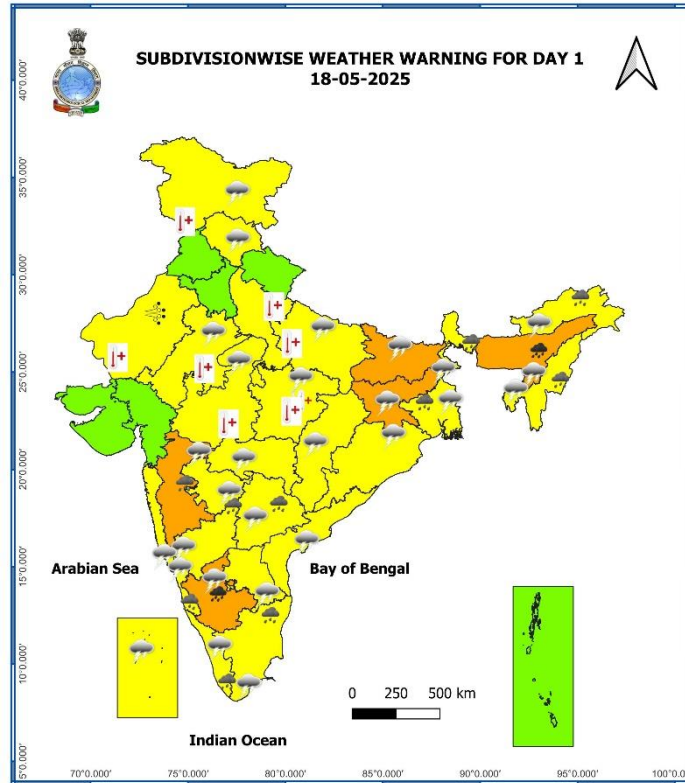
- ❖ **Heavy to Very Heavy Rainfall** likely at isolated places over Konkan & Goa and Madhya Maharashtra.
- ❖ **Heavy Rainfall** likely at isolated places over Arunachal Pradesh, Assam & Meghalaya, Coastal Karnataka, Gujarat State and Kerala & Mahe.
- ❖ **Thunderstorm accompanied with lightning & gusty winds(40-50kmph)** likely at isolated places over East Rajasthan, Konkan & Goa, Madhya Maharashtra and Marathwada.
- ❖ **Thunderstorm accompanied with lightning & gusty winds(30-40kmph)** likely at isolated places over Uttar Pradesh.
- ❖ **Dust Raising Winds** likely at isolated places over West Rajasthan.
- ❖ **Heat Wave conditions** likely at isolated places over West Rajasthan.

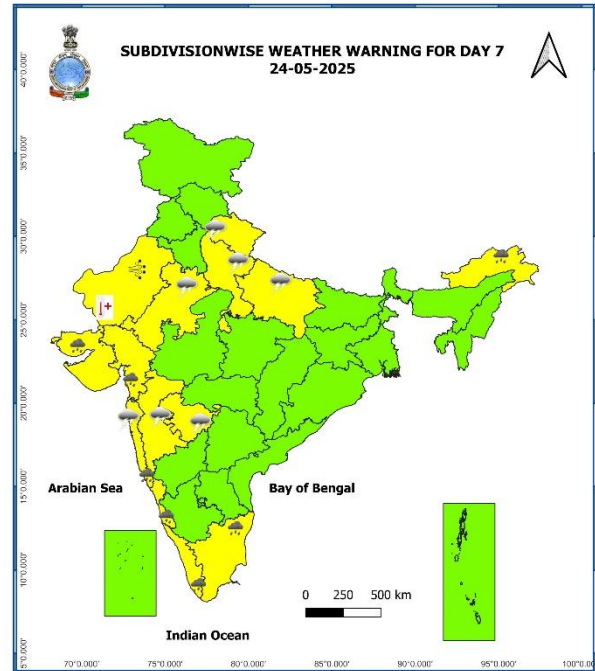
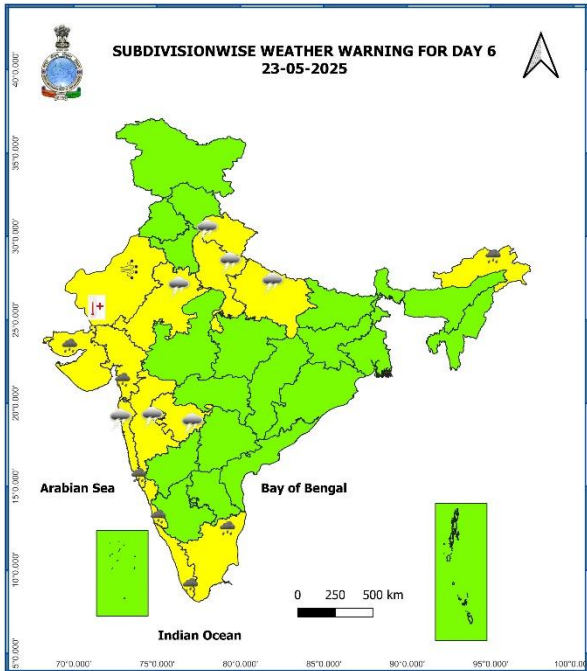
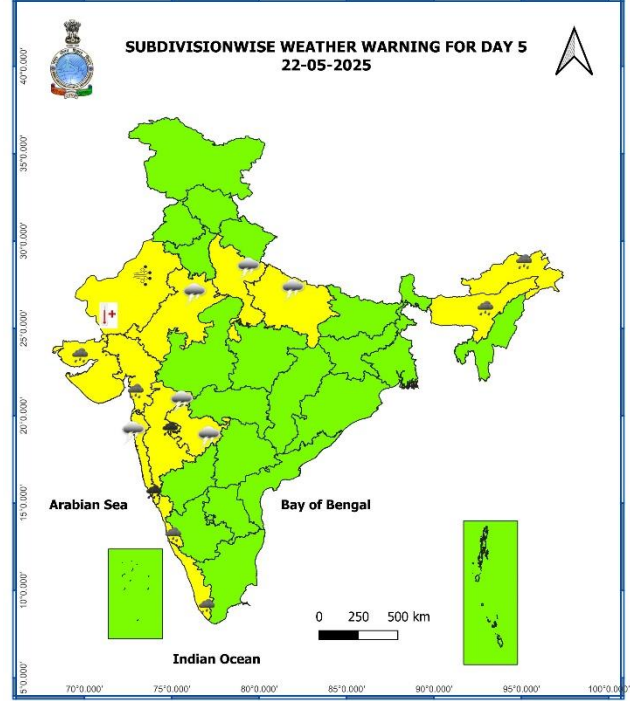
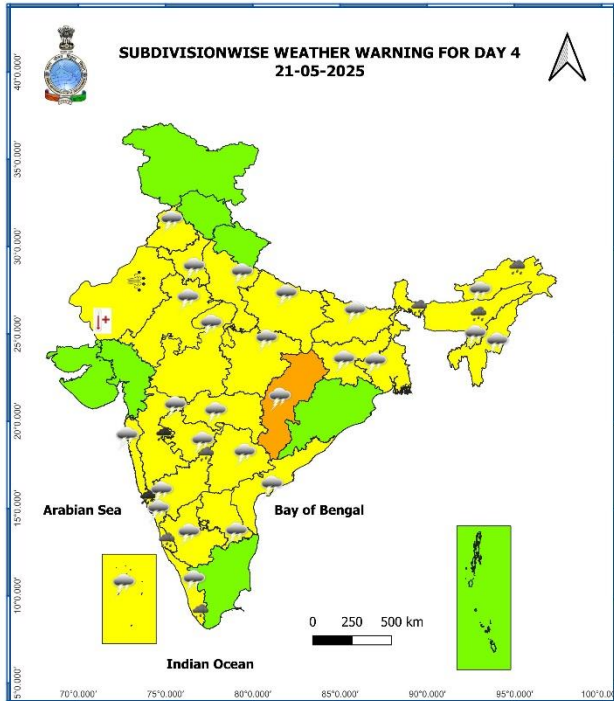
23rd May (Day 6)

- ❖ **Heavy Rainfall** likely at isolated places over Arunachal Pradesh, Coastal Karnataka, Gujarat State, Kerala & Mahe, Konkan & Goa and Tamil Nadu Puducherry & Karaikal.
- ❖ **Thunderstorm accompanied with lightning & gusty winds(40-50kmph)** likely at isolated places over East Rajasthan, Konkan & Goa, Madhya Maharashtra, Marathwada and Uttarakhand.
- ❖ **Thunderstorm accompanied with lightning & gusty winds(30-40kmph)** likely at isolated places over Uttar Pradesh.
- ❖ **Dust Raising Winds** likely at isolated places over West Rajasthan.
- ❖ **Heat Wave conditions** likely at isolated places over West Rajasthan.

24th May (Day 7)

- ❖ **Heavy Rainfall** likely at isolated places over Arunachal Pradesh, Coastal Karnataka, Gujarat State, Kerala & Mahe, Konkan & Goa and Tamil Nadu Puducherry & Karaikal.
- ❖ **Thunderstorm accompanied with lightning & gusty winds(40-50kmph)** likely at isolated places over East Rajasthan, Konkan & Goa, Madhya Maharashtra, Marathwada and Uttarakhand.
- ❖ **Thunderstorm accompanied with lightning & gusty winds(30-40kmph)** likely at isolated places over Uttar Pradesh.
- ❖ **Dust Raising Winds** likely at isolated places over West Rajasthan.
- ❖ **Heat Wave conditions** likely at isolated places over West Rajasthan.





- Action may be taken based on **ORANGE AND RED** COLOUR warnings.
- Vulnerable regions likely urban and hilly areas action may be initiated for heavy rainfall warning.
- As the lead period increases forecast accuracy decreases.

Table-1

7 Days Rainfall Forecast								
S. No.	Subdivision	18-May	19-May	20-May	21-May	22-May	23-May	24-May
		Day 1	Day 2	Day 3	Day 4	Day 5	Day 6	Day 7
1	ANDAMAN & NICOBAR ISLANDS	WS	FWS	SCT	SCT	FWS	FWS	FWS
2	ARUNACHAL PRADESH	WS	FWS	FWS	FWS	FWS	FWS	FWS
3	ASSAM & MEGHALAYA	WS	WS	FWS	FWS	FWS	FWS	FWS
4	NAGALAND, MANIPUR, MIZORAM & TRIPURA	WS	WS	WS	FWS	FWS	FWS	FWS
5	SUB-HIMALAYAN WEST BENGAL & SIKKIM	WS	WS	WS	WS	WS	WS	WS
6	GANGETIC WEST BENGAL	FWS	SCT	SCT	SCT	FWS	SCT	SCT
7	ODISHA	FWS	ISOL	ISOL	ISOL	ISOL	ISOL	ISOL
8	JHARKHAND	SCT	FWS	FWS	FWS	SCT	ISOL	ISOL
9	BIHAR	SCT	SCT	ISOL	ISOL	ISOL	ISOL	ISOL
10	EAST UTTAR PRADESH	ISOL	ISOL	ISOL	ISOL	ISOL	ISOL	ISOL
11	WEST UTTAR PRADESH	DRY	ISOL	ISOL	ISOL	ISOL	ISOL	ISOL
12	UTTARAKHAND	ISOL	SCT	SCT	ISOL	ISOL	SCT	SCT
13	HARYANA CHANDIGARH & DELHI	DRY	ISOL	ISOL	ISOL	ISOL	ISOL	ISOL
14	PUNJAB	DRY	ISOL	ISOL	ISOL	DRY	DRY	DRY
15	HIMACHAL PRADESH	ISOL	SCT	SCT	ISOL	ISOL	ISOL	ISOL
16	JAMMU & KASHMIR AND LADAKH	SCT	FWS	ISOL	ISOL	ISOL	ISOL	ISOL
17	WEST RAJASTHAN	DRY	ISOL	ISOL	ISOL	ISOL	ISOL	ISOL
18	EAST RAJASTHAN	ISOL	ISOL	ISOL	ISOL	ISOL	ISOL	ISOL
19	WEST MADHYA PRADESH	ISOL	ISOL	SCT	SCT	SCT	SCT	SCT
20	EAST MADHYA PRADESH	ISOL	ISOL	ISOL	SCT	SCT	SCT	SCT
21	GUJARAT REGION	ISOL	ISOL	ISOL	SCT	SCT	SCT	SCT
22	SAURASHTRA & KUTCH	ISOL	ISOL	ISOL	ISOL	SCT	SCT	SCT
23	KONKAN & GOA	SCT	SCT	SCT	FWS	WS	WS	WS
24	MADHYA MAHARASHTRA	SCT	ISOL	SCT	SCT	SCT	SCT	SCT
25	MARATHAWADA	ISOL	ISOL	SCT	SCT	ISOL	ISOL	ISOL
26	VIDARBHA	SCT	SCT	SCT	SCT	SCT	SCT	SCT
27	CHHATTISGARH	SCT	ISOL	ISOL	ISOL	ISOL	ISOL	ISOL
28	COASTAL ANDHRA PRADESH & YANAM	SCT	SCT	SCT	SCT	ISOL	ISOL	ISOL
29	TELANGANA	FWS	SCT	SCT	SCT	SCT	SCT	SCT
30	RAYALASEEMA	FWS	FWS	SCT	SCT	ISOL	ISOL	ISOL
31	TAMILNADU PUDUCHERRY & KARAIKAL	SCT	SCT	SCT	ISOL	ISOL	ISOL	ISOL
32	COASTAL KARNATAKA	WS	WS	WS	WS	WS	WS	WS
33	NORTH INTERIOR KARNATAKA	FWS	WS	WS	WS	SCT	SCT	SCT
34	SOUTH INTERIOR KARNATAKA	WS	WS	WS	SCT	SCT	SCT	SCT
35	KERALA & MAHE	FWS	WS	WS	WS	WS	WS	WS
36	LAKSHADWEEP	FWS	WS	WS	WS	WS	WS	WS

• As the lead period increases forecast accuracy decreases.

Impact & Action Suggested due to very heavy rainfall over

Very heavy rainfall over Assam & Meghalaya on 18th; Konkan & Goa on 21st & 22nd; Kerala & Mahe during 19th - 21st; Coastal Karnataka on 20th & 21st May.

Impact Expected

- ❖ Localized Flooding of roads, water logging in low lying areas and closure of underpasses mainly in urban areas of the above region.
- ❖ Occasional reduction in visibility due to heavy rainfall.
- ❖ Disruption of traffic in major cities due to water logging in roads leading to increased travel time.
- ❖ Minor damage to kutcha roads.
- ❖ Possibilities of damage to vulnerable structure.
- ❖ Localized Landslides/Mudslides
- ❖ Damage to horticulture and standing crops in some areas due to inundation.
- ❖ It may lead to riverine flooding in some river catchments (for riverine flooding please visit Web page of CWC).

Action Suggested

- ❖ Check for traffic congestion on your route before leaving for your destination.
- ❖ Follow any traffic advisories that are issued in this regard.
- ❖ Avoid going to areas that face the water logging problems often.
- ❖ Avoid staying in vulnerable structure.

Impact expected and action suggested due to isolated thunderstorm with lightning/gusty & Squally winds & Hailstorm over

- ❖ **Thundersquall wind speed reaching 50-60 kmph gusting to 70 kmph** over Bihar & Jharkhand on 18th & 19th; Madhya Maharashtra on 19th & 20th; Marathawada on 21st and Vidarbha & Chhattisgarh during 19th- 21st May.

- ✓ **Isolated hailstorm** very likely over Himachal Pradesh on 19th May.

Impact expected:

- Breaking of tree branches, uprooting of large avenue trees. Large dead limbs blown from trees. Damage to Standing crops.
- Minor to Major damage to banana and papaya trees.
- Minor to major damage to power and communication lines due to breaking of branches.
- Strong wind/hail may damage plantation, horticulture and standing crops.
- Hail may injure people and cattle at open places.
- Partial damage to vulnerable structures due to strong winds.
- Minor damage to kutcha houses/walls and huts.
- Loose objects may fly.

Action suggested:

- People are advised to keep a watch on the weather for worsening conditions and be ready to move to safer places accordingly.

- Stay indoors, close windows & doors and avoid travel if possible.
- Take safe shelters; do not take shelter under trees.
- Do not lie on concrete floors and do not lean against concrete walls.
- Unplug electrical/ electronic appliances.
- Immediately get out of water bodies.
- Keep away from all the objects that conduct electricity.

Impact expected and action suggested due to Heat wave conditions over Jammu & Kashmir, East Uttar Pradesh on 18th; southwest Uttar Pradesh, East Rajasthan, north Madhya Pradesh during 18th-19th; West Rajasthan during 18th-23rd May.

Yellow alert Areas

- Moderate temperature & heat is tolerable for general public but moderate health concern likely for vulnerable people e.g. infants, elderly, people with chronic diseases.
- Avoid heat exposure.
- Wear lightweight, light colour, loose, cotton clothes.
- Cover your head, use a cloth, hat or umbrella.

Agromet advisories for likely impact of Heavy Rainfall / Hailstorm / Gusty Winds / Heat Wave

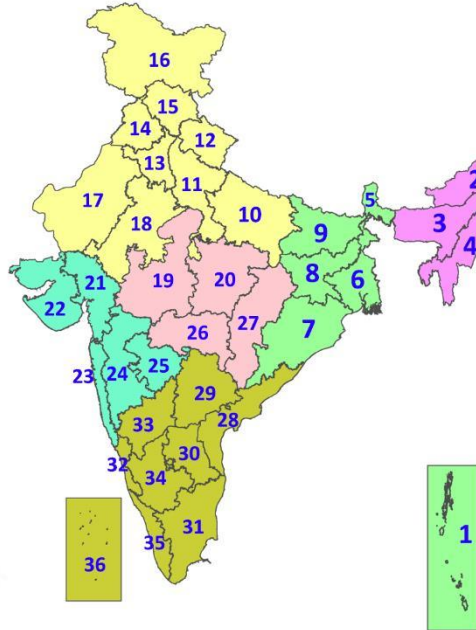
- In the **North Eastern States** and **Tamil Nadu**, drain excess water and ensure proper drainage in fields with standing crops and vegetables.
- In **Andaman & Nicobar Islands, West Bengal & Sikkim, Bihar, Konkan & Goa, Madhya Maharashtra, Kerala, Karnataka** and **Telangana**, make provision to drain out excess water from standing crop and vegetable fields.
- Shift the harvested produce in safer places or cover the produce with tarpaulin sheets in the fields. Tie the harvested crops properly and cover them to minimise the risk of displacement due to strong surface winds.
- Provide mechanical support to horticultural crops and staking to vegetables to avoid lodging.
- In **Jammu & Kashmir, Punjab, Uttar Pradesh, Rajasthan** and **North Madhya Pradesh**, apply light and frequent irrigation in the evening to protect standing crops, vegetables and orchards from the adverse effects of heat waves and high temperatures.

Livestock / Poultry / Fishery

- Keep the animals inside the shed during heavy rainfall and provide them balanced feed.
- Store feed and fodder in a safe place to prevent spoilage.
- Construct an outlet with proper netting around the ponds to drain out excess water, thereby preventing fish from escaping in case of overflow.
- To reduce the effect of heat wave/high temperature, cover the roof of poultry sheds with grass. Also, provide clean, hygienic and plenty of drinking water to animals.

LEGENDS

1. अंडमान और निकोबार द्वीपसमूह
2. अरुणाचल प्रदेश
3. असम और मेघालय
4. नागालैंड, मणिपुर, मिजोरम और त्रिपुरा
5. उप-हिमालयी पश्चिम बंगाल और सिक्किम
6. गंगीय पश्चिम बंगाल
7. ओडिशा
8. झारखंड
9. बिहार
10. पूर्वी उत्तर प्रदेश
11. पश्चिम उत्तर प्रदेश
12. उत्तराखंड
13. हरियाणा, चंडीगढ़ और दिल्ली
14. पंजाब
15. हिमाचल प्रदेश
16. जम्मू और कश्मीर और लद्दाख
17. पश्चिम राजस्थान
18. पूर्वी राजस्थान
19. पश्चिम मध्य प्रदेश
20. पूर्वी मध्य प्रदेश
21. गुजरात
22. सौराष्ट्र
23. कोंकण और गोवा
24. मध्य महाराष्ट्र
25. मराठवाड़ा
26. विदर्भ
27. छत्तीसगढ़
28. तटीय आंध्र प्रदेश और यनम
29. तेलंगाना
30. रायलसीमा
31. तमिलनाडु, पुडुचेरी और कराईकल
32. तटीय कर्नाटक
33. आंतरिक उत्तरी कर्नाटक
34. आंतरिक दक्षिणी कर्नाटक
35. केरल और माहे
36. लक्षद्वीप



1. Andaman & Nicobar Islands
2. Arunachal Pradesh
3. Assam & Meghalaya
4. Nagaland, Manipur, Mizoram & Tripura
5. Sub-Himalayan West Bengal & Sikkim
6. Gangetic West Bengal
7. Odisha
8. Jharkhand
9. Bihar
10. East Uttar Pradesh
11. West Uttar Pradesh
12. Uttarakhand
13. Haryana, Chandigarh & Delhi
14. Punjab
15. Himachal Pradesh
16. Jammu & Kashmir and Ladakh
17. West Rajasthan
18. East Rajasthan
19. West Madhya Pradesh
20. East Madhya Pradesh
21. Gujarat
22. Saurashtra
23. Konkan & Goa
24. Madhya Maharashtra
25. Marathwada
26. Vidarbha
27. Chhattisgarh
28. Coastal Andhra Pradesh & Yanam
29. Telangana
30. Rayalaseema
31. Tamilnadu, Puducherry & Karaikal
32. Coastal Karnataka
33. North Interior Karnataka
34. South Interior Karnataka
35. Kerala & Mahe
36. Lakshadweep

SPATIAL DISTRIBUTION (% of Stations reporting)

% Stations	Category	% Stations	Category
76-100	Widespread (WS/Most Places)	26-50	Scattered (SCT/A Few Places)
51-75	Fairly Widespread (FWS/Many Places)	1-25	Isolated (ISOL)

- | | | |
|----------------------|----------------------|--------------|
| Fog | Heavy Snow | Cold Wave |
| Heavy Rain | Dust Storm | Cold Day |
| Very Heavy Rain | Heat Wave | Ground Frost |
| Extremely Heavy Rain | Warm Night | |
| Thunder & Lightning | Hot Day | |
| Hailstorm | Hot & Humid | |
| Dust Raising Winds | Strong Surface Winds | |

COLOUR CODED WARNING

- No Warning (No Action)
- Watch (Be Aware)
- Alert (Be Prepared To Take Action)
- Warning (Take Action)

Probabilistic Forecast

Terms	Probability of Occurrence (%)
Unlikely	< 25
Likely	25 - 50
Very Likely	50 - 75
Most Likely	> 75

DEFINITION/CRITERIA

Rain/ Snow *

Heavy: 64.5 to 115.5 mm/cm *

Very Heavy: 115.6 to 204.4 mm/cm *

Extremely Heavy: > 204.4 mm/cm *

Heat Wave

When maximum temperature of a station reaches $\geq 40^{\circ}\text{C}$ for plains and $\geq 30^{\circ}\text{C}$ for hilly regions

(a) Based on Departure from normal

Heat Wave: Maximum Temperature Departure from normal 4.5°C to 6.4°C .

Severe Heat Wave: Maximum Temperature Departure from normal $\geq 6.5^{\circ}\text{C}$

(b). Based on Actual maximum temperature

Heat Wave: When actual maximum temperature $\geq 45^{\circ}\text{C}$.

Severe Heat Wave: When actual maximum temperature $\geq 47^{\circ}\text{C}$

(c). Criteria for heat wave for coastal stations

When maximum temperature departure is $> 4.5^{\circ}\text{C}$ from normal. Heat Wave may be described provided maximum temperature $\geq 37^{\circ}\text{C}$

Warm Night

When maximum temperature remains 40°C

Warm Night: When minimum temperature departure 4.5°C to 6.4°C .

Severe Warm Night: When minimum temperature departure $> 6.4^{\circ}\text{C}$.

Cold Wave

When minimum temperature of a station $\leq 10^{\circ}\text{C}$ for plains and $\leq 0^{\circ}\text{C}$ for hilly regions.

(a). Based on departure

Cold Wave: Minimum Temperature Departure from normal -4.5°C to -6.4°C .

Severe Cold Wave: Minimum Temperature Departure from normal $\leq -6.5^{\circ}\text{C}$

(b) Based on actual Minimum Temperature (for Plains only)

Cold Wave : When Minimum Temperature is $\leq 4.0^{\circ}\text{C}$

Severe Cold Wave: When Minimum Temperature is $\leq 2.0^{\circ}\text{C}$

(c) For Coastal Stations

When Minimum Temperature departure is $\leq -4.5^{\circ}\text{C}$ & actual Minimum Temperature is $\leq 15^{\circ}\text{C}$

Cold Day

When minimum temperature of a station $\leq 10^{\circ}\text{C}$ for plains and $\leq 0^{\circ}\text{C}$ for hilly regions

Based on departure

Cold Day: Maximum Temperature Departure from normal -4.5°C to -6.4°C .

Severe Cold Day: Maximum Temperature Departure from normal $\leq -6.5^{\circ}\text{C}$

Fog

Phenomenon of small droplets suspended in air and the horizontal visibility $< 1\text{km}$

Moderate Fog: When the visibility between 500-200 metres

Dense Fog: when the visibility between 50- 200 metres

Very Dense Fog: when the visibility < 50 metres

Thunderstorm

Sudden electrical discharges manifested by a flash of light (Lightning) and a sharp rumbling sound (thunder)

Dust/Sand Storm

An ensemble of particles of dust or sand energetically lifted to great heights by a strong and turbulent wind.

Frost

Ice deposits on ground

Air temperature $\leq 4^{\circ}\text{C}$ (over Plains)

Squall

A strong wind that rises suddenly, lasts for atleast 1 minute.

Moderate: Wind speed 52-61 kmph

Severe: Wind speed 62-87 kmph

Very Severe: Wind speed > 87 kmph

Sea State

Effect of various waves in the sea over specific area

Rough to very rough: Wind speed 41-62 kmph (22-33 knots) & Wave height 2.5-6 metre

High to very high: Wind speed 63-117 kmph (34-63 knots) & Wave height 6-14 metre

Phenomenal: Wind speed > 117 kmph (> 63 knots) & Wave height > 14 metre

Cyclone

Cyclonic Storm: Wind speed 62-87 kmph (34-47 knots)

Severe Cyclonic Storm: Wind speed 88-117 kmph (48-63 knots)

Very Severe Cyclonic Storm: Wind speed 118-165 kmph (64 - 89 knots)

Extremely Severe Cyclonic Storm: Wind speed 166-220 kmph (90 -119 knots)

Super Cyclone Storm: Wind speed > 220 kmph (> 119 knots)

* Red colour warning does not mean "Red Alert", Red colour warning means "Take Action".
Forecast and Warning for any day is valid from 0830 hours IST of day till 0830 hours IST of next day.
For more details, kindly visit <https://mausam.imd.gov.in> or contact: 011-2434-4599
(Service to the Nation since 1875)

Hot and Humid: When maximum temperatures remains 3°C above normal along with the above normal relative humidity.